

Evaluating the Efficiency of a Collection Device for Quantifying Densities of Early Life Stages of Smallmouth Bass in Streams

J. Burroughs¹, B. Brown¹, and S. K. Brewer²

¹Oklahoma Department of Wildlife Conservation

²U.S. Geological Survey, Oklahoma Cooperative Fish and Wildlife Research Unit,
Oklahoma State University





Presence of spawning
populations

Reproductive timing &
importance of
spawning sites

Quality or importance
of spawning sites

Ecology of early life
history



OBJECTIVE

Design and test efficiency of device for sampling early life stages under dominant substrate and velocity conditions.

Smallmouth bass

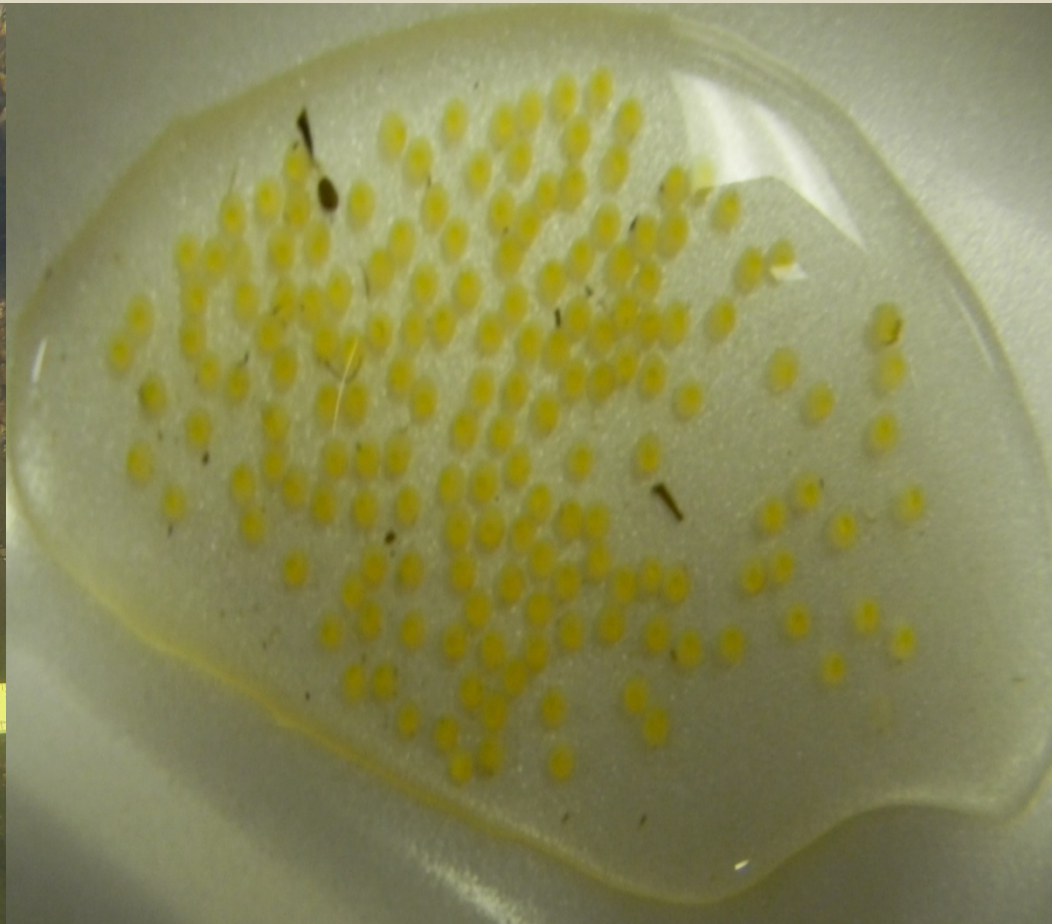
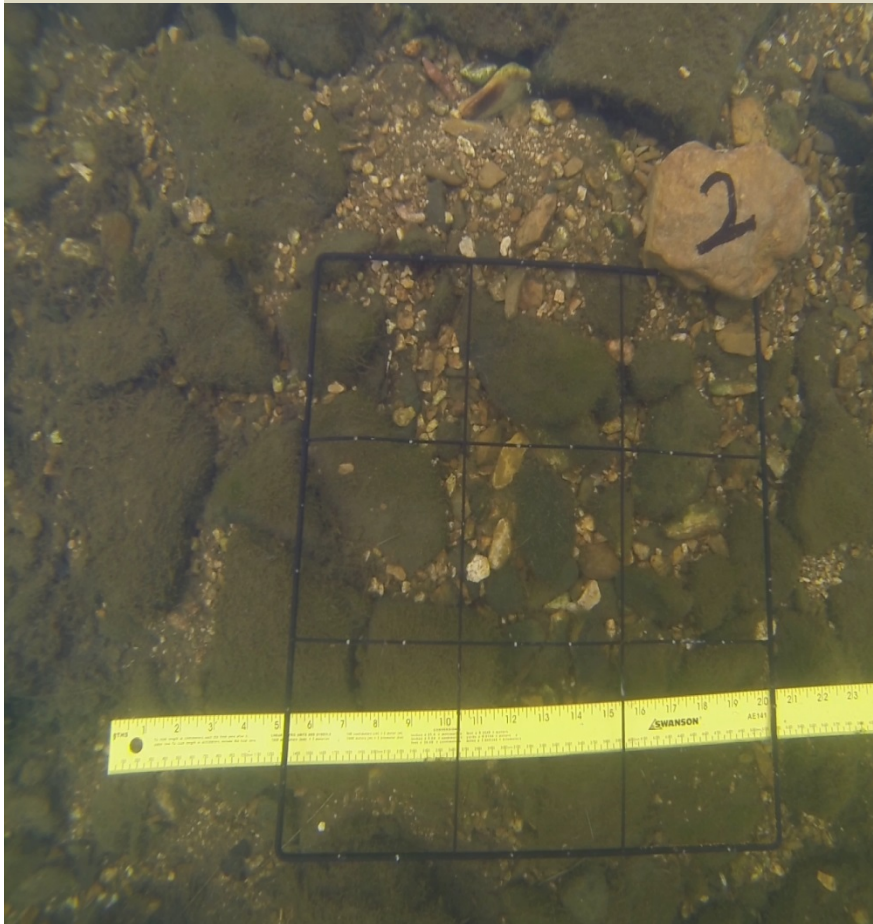
Classic spawning model

- Excavate a saucer-shaped depression in coarse substrates
- Guard nests and fry

❑ Neosho
smallmouth bass
different?



Counting eggs by software “Image J” and others



Device design.....

Several trial designs were constructed and preliminary tests conducted. *



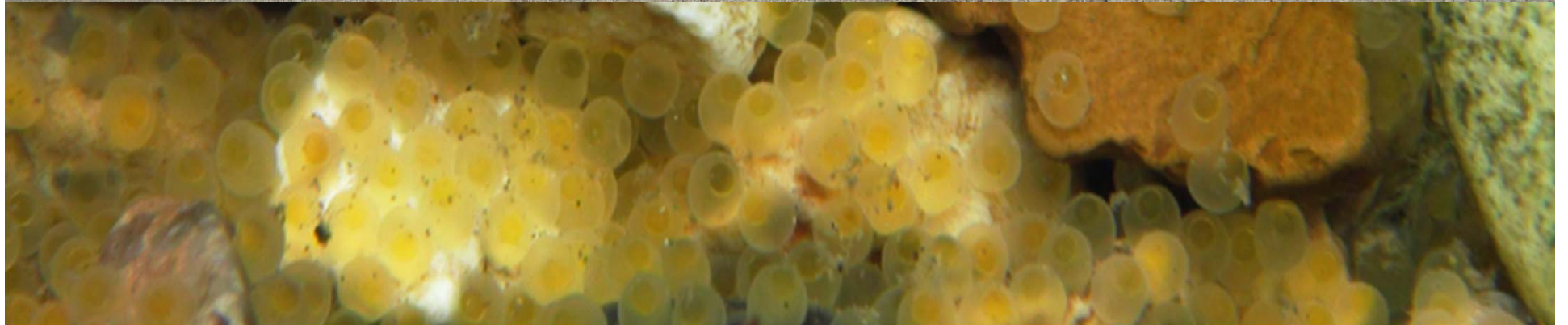
Scoop Technique



Tested Design Model

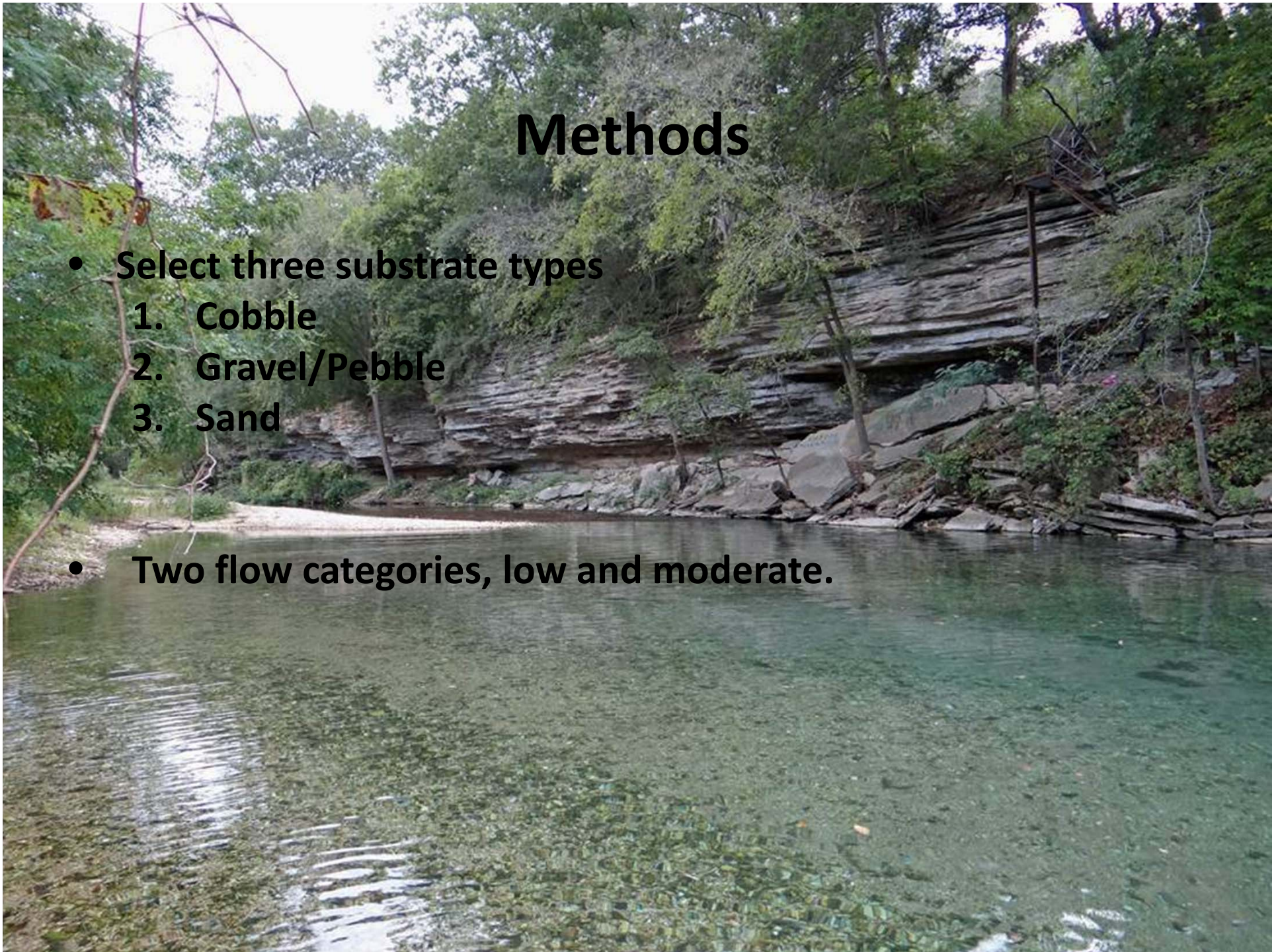


4" PVC...Approximately 28 inches in length. $\frac{3}{4}$ " suction hose with attached funnel. Inline mesh collection bag. 12v bilge pump.



Methods

- Select three substrate types
 1. Cobble
 2. Gravel/Pebble
 3. Sand
- Two flow categories, low and moderate.



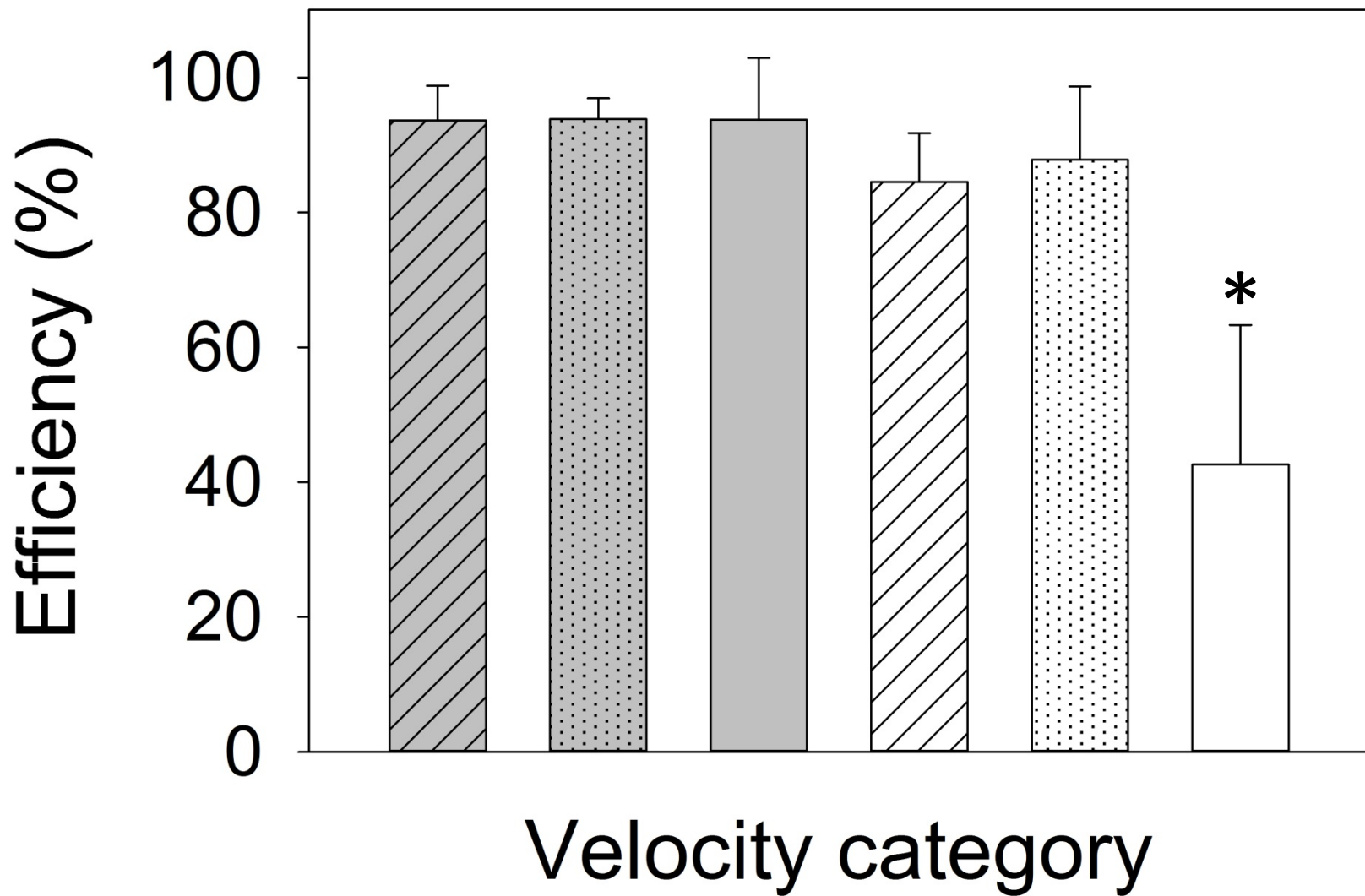




General Linear Model (Proc Glimmix)

Effect	Num DF	Den DF	F Value	Pr > F
velocity	1	23	42.81	<.0001
substrate	2	23	27.58	<.0001
velocity*sub	2	23	27.38	<.0001
depth	1	23	1.29	0.2678





Summary

- Efficient at collecting egg surrogates in all substrates under low velocity conditions
- Efficiency greatly reduced in shifty sand substrates in moderate velocities
- Useful gear for collecting eggs of nest builders under various conditions



Fry collection also shows great promise. *



Additional testing will be required but in two trials 3100 and 2100 fry were collected with only 3 and 7 fry present upon later inspection.



Special Thanks to:

- The Oklahoma Department of Wildlife Conservation
- ODWC staff and interns of the East Central Region, Autumn Sinor and Brian Decker.
- USGS
- OSU
- Sport Fish Restoration

